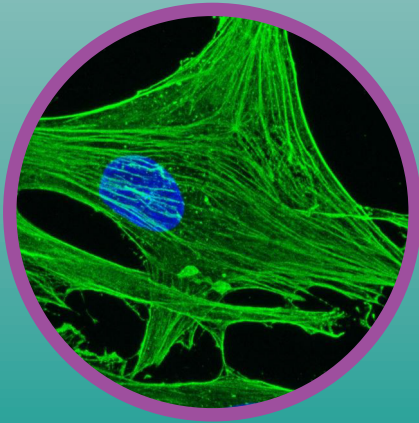
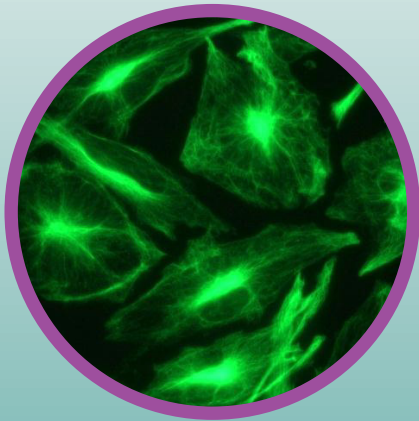


Cytoskeleton Research Products



Nordic-MUBio has developed an ever-expanding range of high quality immunological research tools, manufactured to strict ISO 9001 guidelines, to provide both reassurance and the best possible tools for your research.

Nordic-MUBio offers the highest quality range of products for the study of cytoskeleton proteins. They just work.

The cytoskeleton plays a role in cell motility, intracellular transport, cytokinesis, cell stability, cell division and the organisation of the organelles within the cell.

This makes cytoskeleton proteins of interest and importance to a huge range of research areas from immunology to cancer research and from embryology to ageing research.

We know you need reliable products that just work for your research. And that's why we've developed a portfolio of cytoskeleton products with a wealth of validation data.

Whether your application is immunohistochemistry, western blotting or flow cytometry, if we list it as an application you can be sure that our products will work. Saving you not only money, but more importantly, time and precious sample.

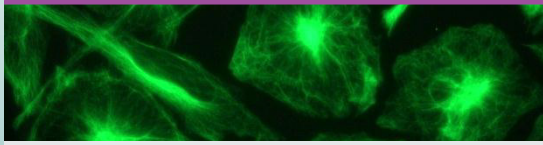
Together with our strict ISO 9001 manufacturing and quality control you can be sure each of our products will work time after time, lot after lot.

Visit www.nordicmubio.com/Products now to find the products you need for your cytoskeleton research, or get in touch on info@nordicmubio.com

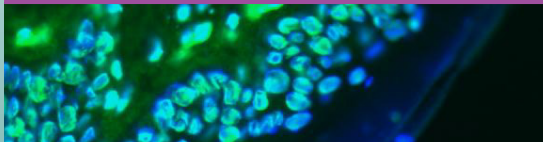


Find **more** at nordicmubio.com

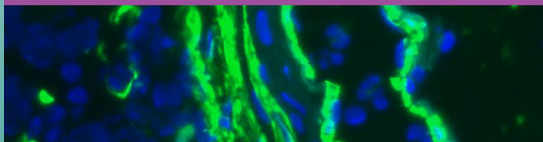
Our Top 15 Products for Cytoskeleton Research



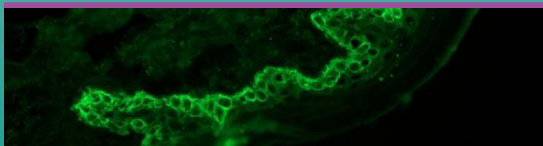
MUB1302: Immunostaining of intracellular nestin filaments in U251 cells



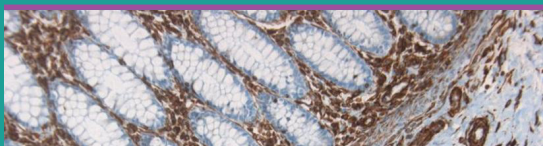
MUB1102: Lamin A & C of human colon showing nuclear lamina staining in epithelial and connective tissue cells



MUB0100: α -smooth muscle actin immunostaining in frozen section of human small intestine.



MUB0323: Cytokeratin 14 in swine skin showing basal cell staining



MUB1900L1: Vimentin on paraffin section of human colon

Cytokeratins

Antigen	Catalogue Number	Clone	Application
Cytokeratin 5 and 8	MUB0314	RCK102	FC, ICC, IHC(F), IHC(P), WB
Cytokeratin 7	MUB0315	RCK105	FC, ICC, IHC(F), WB
Cytokeratin 7	MUB0316	OVTL12/30	FC, ICC, IHC(F), IHC(P), WB
Cytokeratin 10	MUB0320	DE-K10	FC, ICC, IHC(F), IHC(P), WB
Cytokeratin 14	MUB0323	RCK107	FC, ICC, IHC(F), WB
Cytokeratin 18	MUB0326	RGE53	FC, ICC, IHC(F), WB
Cytokeratin 19	MUB0329	RCK108	FC, ICC, IHC(F), IHC(P), WB

Other Cytoskeletal Proteins

Antigen	Catalogue Number	Clone	Application
Smoothelin	MUB1700	R4A	ICC, IHC(F), IHC(P), WB,
Vimentin	MUB1900	RV202	FC, ICC, IHC(F), IHC(P), WB
Nestin	MUB1302	10C2	ICC, IHC(F), IHC(P), WB
Desmin	MUB0400	RD301	ICC, IHC(F), ICC
Actin (α -smooth muscle)	MUB0100	1A4	ICC, IHC(F), IHC(P), WB, EM
Lamin A	MUB1101	133A2	FC, ICC, IHC(F), IHC(P), WB
Lamin A and C	MUB1102	131C3	FC, ICC, IHC(F), WB
Lamin B1	MUB1103	119D5-F1	FC, ICC, IHC(F), WB, EL

Applications Key:

FC: Flow Cytometry

IHC(F): Immunohistochemistry (frozen)

IHC(P): Immunohistochemistry (paraffin)

EL: ELISA

ICC: Immunocytochemistry

WB: Western blot

EM: Electron microscopy

Contact your local distributor here:



Find more at nordicmubio.com